

# OPEN INNOVATION IN REGGIO EMILIA

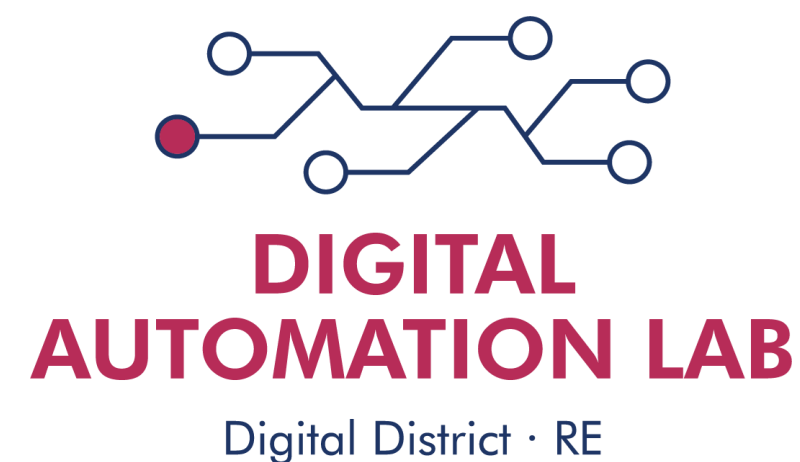
FONDAZIONE  
**REI**

Reggio Emilia, 05 May 2026





**TECNOPOLO & TECH TRANSFER:  
Promotion of over 80 Industrial Research Laboratories**



**LABORATORY:**  
Demonstrations and design of applications in  
Robotic, Automation and IIoT.



**Acceleration of startups and promotion of  
collaborations with companies.**



# 3 LOCATIONS



# FONDAZIONE

# IREI

Fondatori e Sostenitori

## MISSION:

Promotes and implements industrial research, innovation, technology transfer and digitalization to support economic development in Reggio Emilia and the region.



CAMERA DI COMMERCIO  
DELL'EMILIA



CONFINDUSTRIA REGGIO EMILIA

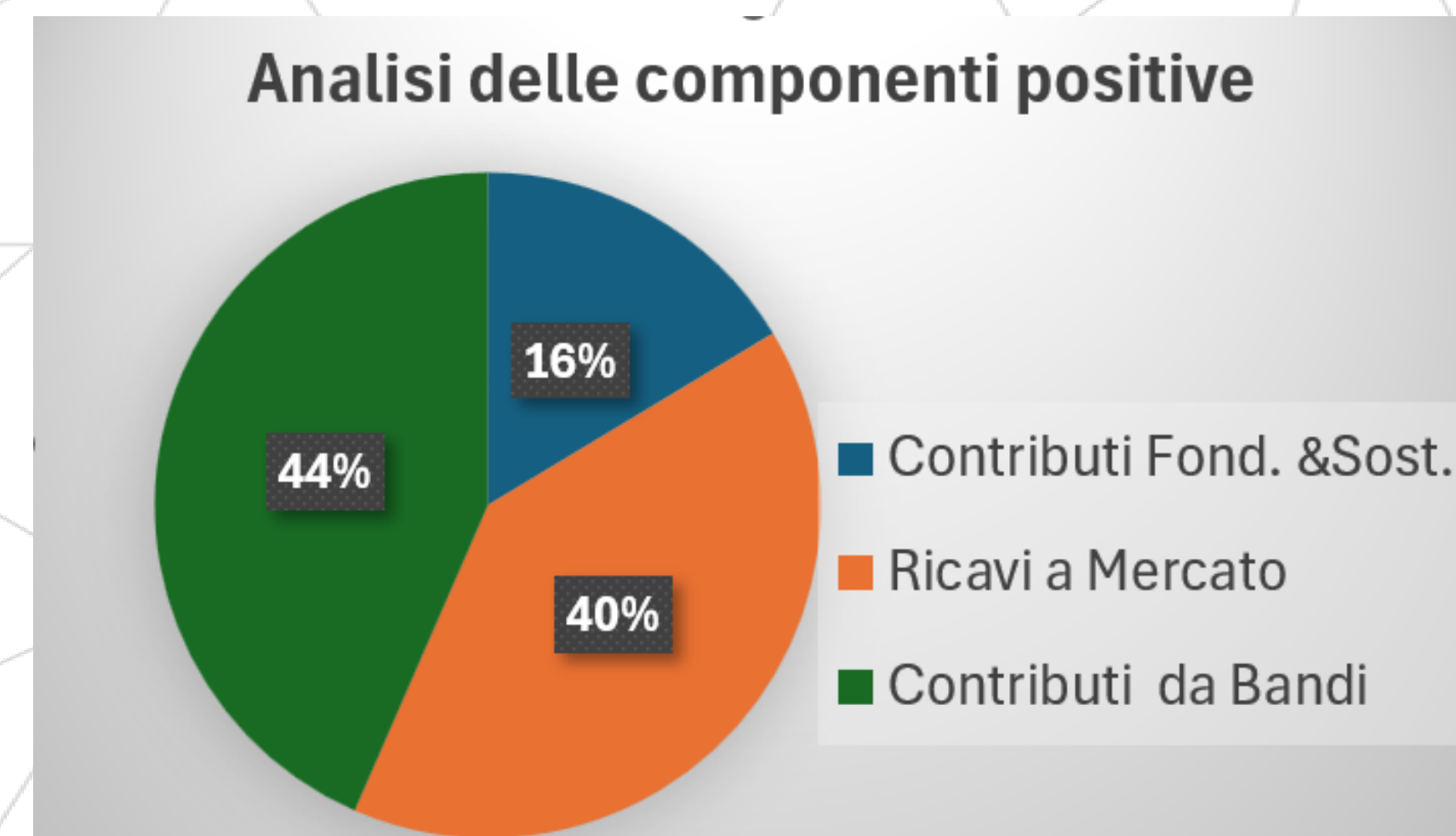


FONDAZIONE  
CASSA DI RISPARMIO  
DI REGGIO EMILIA  
PIETRO MANODORI

## COLLABORATORI:

## IMPRESE INCONTRATE:

## RICAVI E CONTRIBUTI:



**#15**  
13,8 FTE

**#162**  
(01/01/2025 – 31/12/2025)

**1.894 K€**  
(Forecast 2025)

**#16**  
14,1 FTE

**#155**

**1.495 K€**



«**THE HOME**  
**WHERE COMPANIES MEET**  
**INDUSTRIAL RESEARCH**»

**DEALER OF**  
**80+ INDUSTRIAL RESEARCH LABS**



# TECNOPOLES

# INDUSTRY OF FOCUS



ADVANCED  
MANUFACTURING



DIGITAL



AGRI-MECH



ENVIRONMENT  
& ENERGY



**CLUST-ER**  
**AGRIFOOD**  
AGRIFOOD

**CLUST-ER**  
**BUILD**  
BUILDING AND CONSTRUCTION

**CLUST-ER**  
**CREATE**  
CULTURE AND CREATIVITY

**CLUST-ER**  
**GREENTECH**  
ENERGY AND SUSTAINABILITY

**CLUST-ER**  
**HEALTH**  
HEALTH AND WELLBEING

**CLUST-ER**  
**INNOVATE**  
INNOVATION IN SERVICES

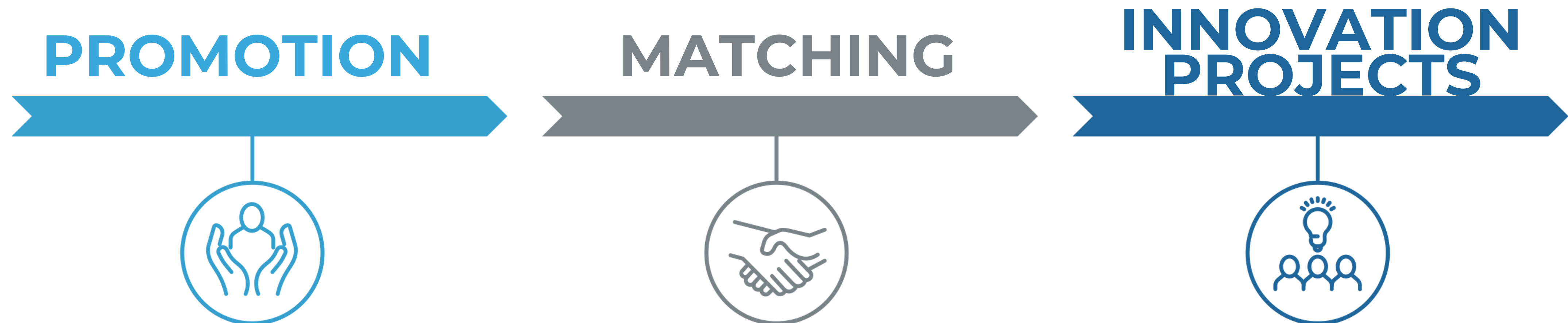
**CLUST-ER**  
**MECH**  
MECHATRONICS AND MOTORSPORTS

**CLUST-ER**  
**TOURISM**  
TOURISM AND TERRITORY

**CLUST-ER**  
**URBAN**  
URBAN ECONOMY

associazione  
**BigData**  
from volume to value







# DIGITAL AUTOMATION LAB

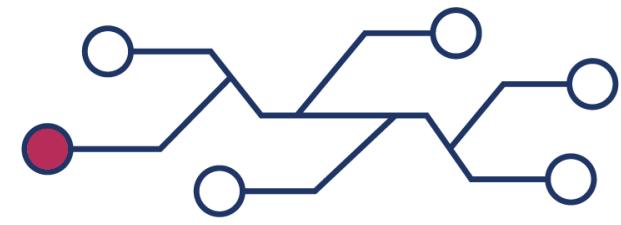




# LABORATORIO DIGITAL AUTOMATION LAB 2026 ISOBUS LAB

Progetti e proposte commerciali per l'innovazione industriale.





**DIGITAL  
AUTOMATION LAB**

Digital District · RE



**Advanced manufacturing  
demonstration lab for:**

**Automation & robotics  
Vision Systems  
IIoT  
Digital & AI Manufacturing**

**LABORATORIO DELLE IMPRESE PER LE IMPRESE**



**DIGITAL  
AUTOMATION LAB**

Digital District · RE

# TEST BEFORE INVEST

DIGITAL & ADVANCED MANUFACTURING



FONDAZIONE REI

# Evoluzione per il 2026: Advanced robotics

Presented by: [Andrea Parmeggiani], [Direttore]



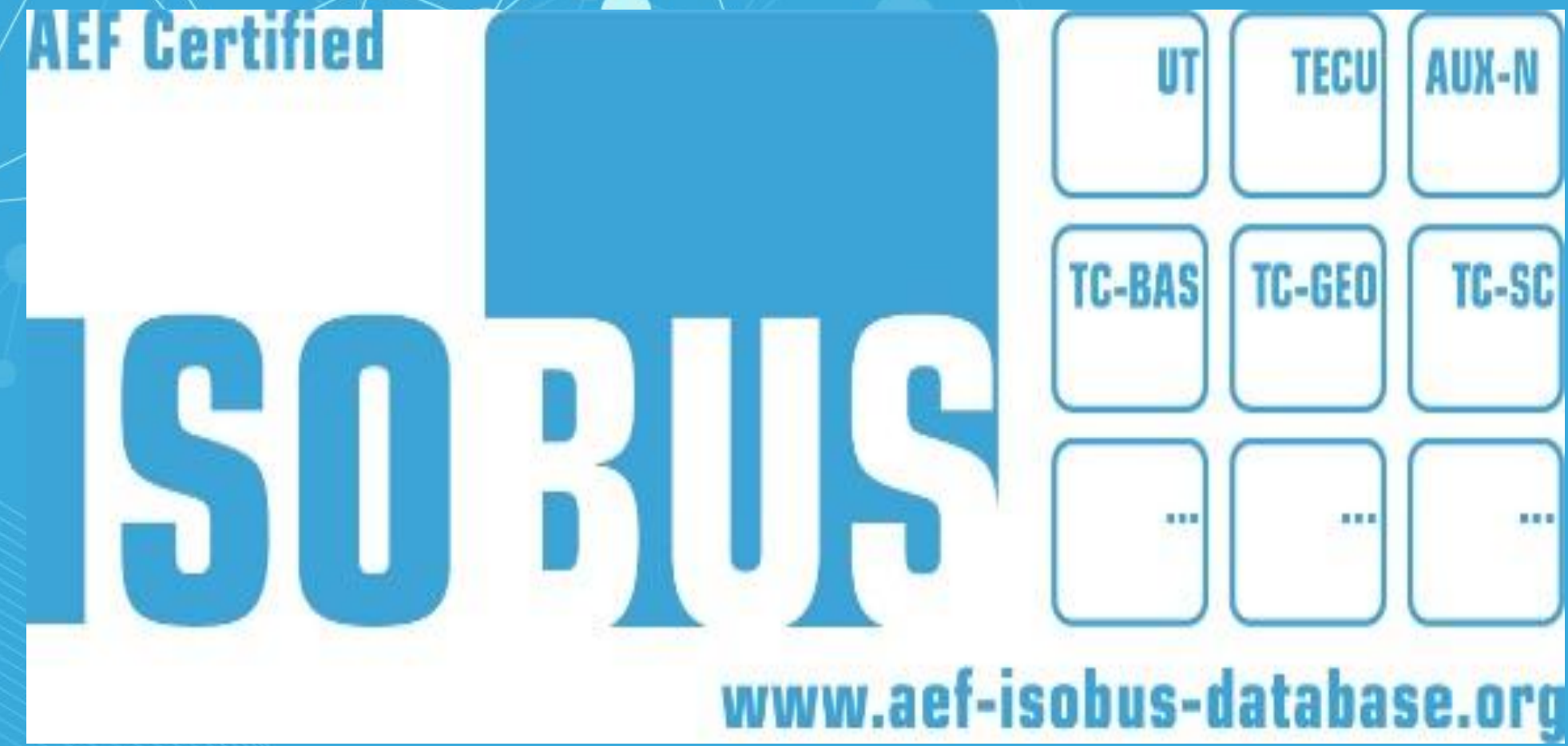
# CASE STUDIES

---

**Discussione di casi studio reali che illustrano come le nostre soluzioni siano applicate in vari contesti**



**DIGITAL  
AUTOMATION LAB**



# ISOBUS LAB



# TECH-UP ACCELERATOR:

ACCELERATES STARTUPS AND PROMOTES OPEN INNOVATION  
THROUGH:  
HARDWARE ACADEMY, COACHING, FAST TRACK, AND  
SUPPORT FOR GO-TO-MARKET STRATEGIES.



## Le startup e i team imprenditoriali

**1166**  
Richieste di  
incubazione annuali

**434**  
Realtà incubate

**218**  
Startup innovative

MEDIA LAVORATORI  
NEI TEAM DELLE  
STARTUP

**4 FTE**

## 32 incubatori e gli acceleratori

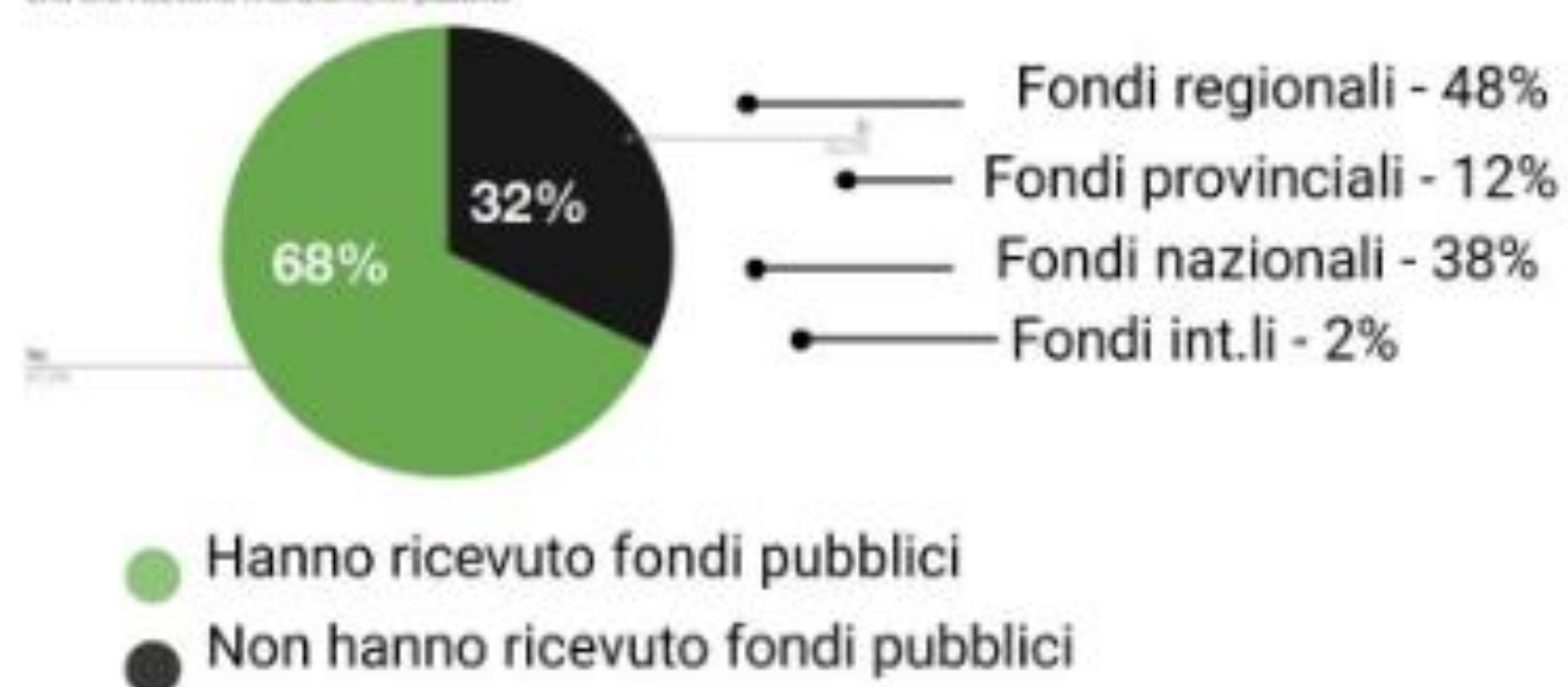


## I SERVIZI PIÙ OFFERTI



## INCUBATORI CHE DURANTE L'ANNO RICEVONO FONDI PUBBLICI

Enti che ricevono finanziamenti pubblici



# FOR STARTUPS



## ACCELERATION

Hardware Academy  
HAC - Hardware Acceleration Coaching  
Fast Track  
StartCup Emilia Romagna



## SCOUTING & MATCHING

Match-making corporations and SMEs;  
Go-to-market planning  
Pilot projects & POC



## FUNDRAISING

Investor Days  
Demo Days



## ACCELERATION «AS A SERVICE» FOR CORPORATES



# FOR CORPORATES



## STARTUP SCOUTING & DEMO DAY

On demand



## Intra-preneurship

People development and open innovation mind-setting



## STUDENT CHALLENGES

Talent scouting

# Thank you for your attention!

## Andrea Parmeggiani

[andrea.parmeggiani@fondazionerei.it](mailto:andrea.parmeggiani@fondazionerei.it)

Mobile +39 347 3439246